



February 2025
PAINT-IN-PLACE

With February weather unpredictable, we encouraged everyone to paint at the place of their own choosing.

This could be done outside or inside.

Here are those that were painted-out / in-place! *Enjoy!*

PLEIN AIR

February 2025

I started working on this yesterday, not outside. I have more to do, but since we were expecting possible rain, I decided this would be my plein air painting. I will be working on this during the week and when it's done, it's to be sent to my sister in law. It's a bit of a challenge as I don't paint animals, very often. I call the painting Friends.

It's done on Ampersand Board, 8 x 10 using various pastels both hard and soft.

Nancy Clausen
Swannanoa, N.C.



PLEIN AIR

February 2025

12x9 grey pastel mat, with pan pastels, my second effort with these.

Title: Winter Walk Shadows.

Pam Clifford

Hendersonville, NC

*"When the power of love overcomes the love of power,
the world will know peace." Jimi Hendrix*



PLEIN AIR

February 2025

“Kalanchoe in February”

12 x 9

Although it was okay outside I chose a spot where my plants were sitting under a window. I’ve had this stalwart Kalanchoe for many months and wanted to capture it reaching for the sun.

With a sheet of black ArtSpectrum I went to town with my new pan pastels bringing up the values. The rest was a combination of hard and soft pastels. I learned that I really like the pan pastels but needed to exercise more control before painting over them. Always a learning experience!

Diane de Grasse

Black Mountain, NC



PLEIN AIR

February 2025

If you know me, you know that I love trees. This is just one of those misty gray days and a tree across the street. Glorified. (In my eyes).

Terrilynn Dubreuil
Asheville, NC

TravelingArtista.com



PLEIN AIR

February 2025

Greetings,

Saturday was socked in with fog, so I went with a recent snowy photo. This is 9x12 on Uart 400, blocked on with nupastels, washed selectively with alcohol then developed with mostly Terri Ludwig.

Titled "Cold but Bright".

Thank you,

Will Evans
Fairview, NC

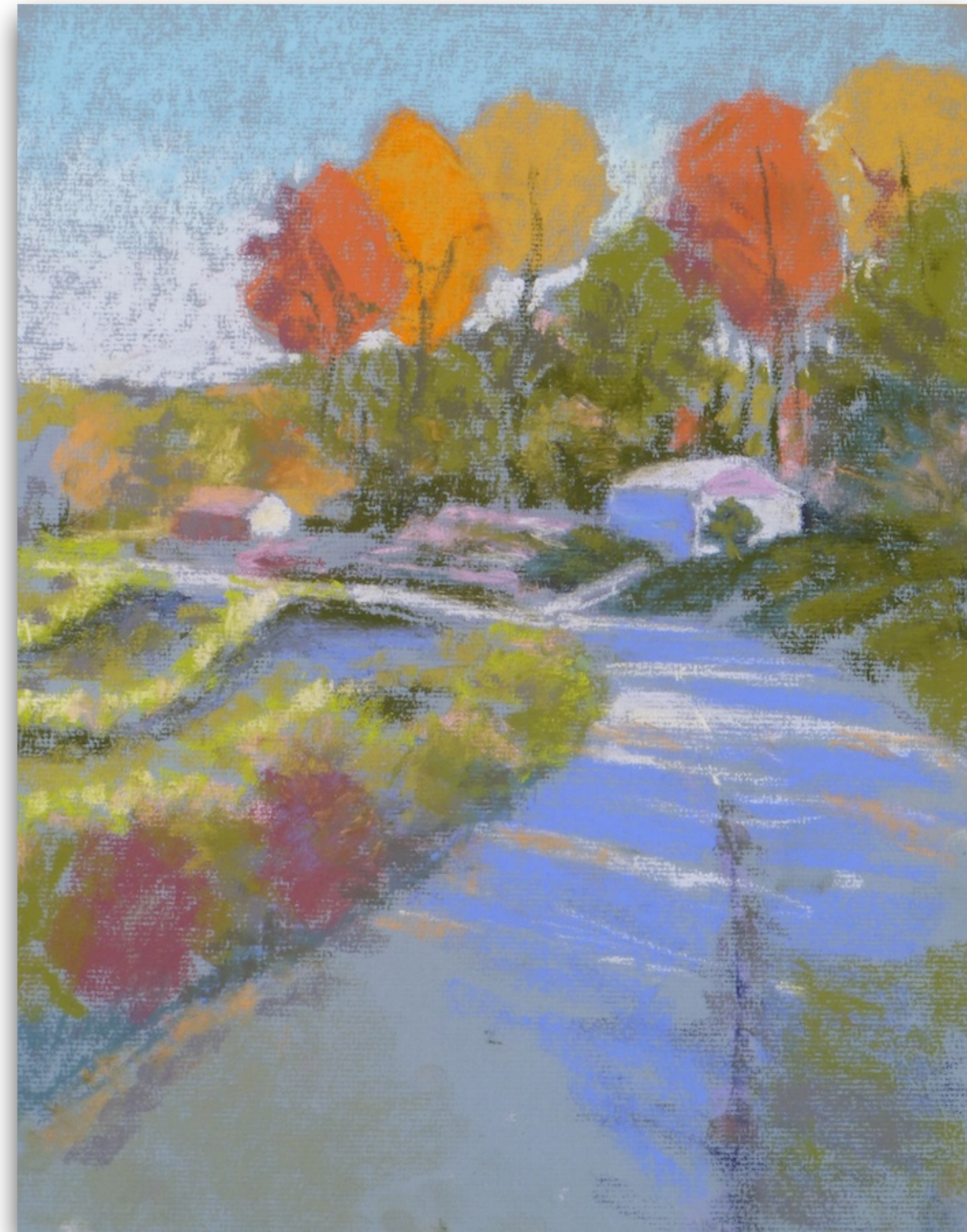


PLEIN AIR

February 2025

Attached is an 11.5 x 14.5 pastel on canson paper titled "Lakeside Walkway" which is a quick study for a larger painting that I'm planning on doing. Thanks.

Cindy Lidd
Garner, NC

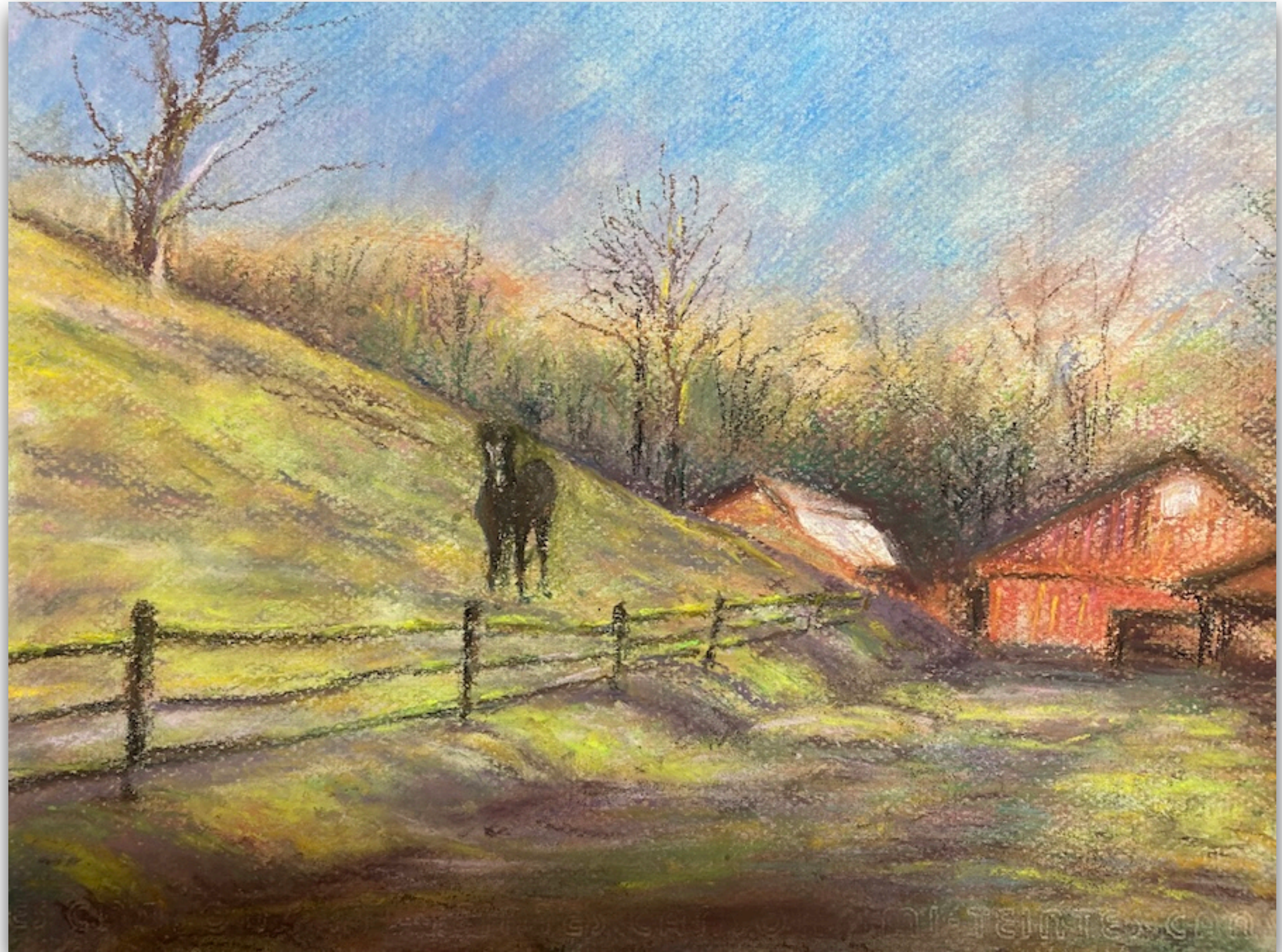


PLEIN AIR

February 2025

Pastels on mi teintes grey.
Hidden barn in area.
Tried to add some finishing
inside, still needs work.
Size 9 x12

Margaret Lyn-Soroken
Black Mountain, NC



PLEIN AIR

February 2025

Dear Nancy and Gary: I started this as an outdoor sketch along a favorite riverside trail, but I could not finish it due to coldness and anxiety about the Superbowl the following day. Well, my team won (yea Birds!) but I never managed to scale this up on pastel paper. If this can't be counted as a proper plein air pastel painting, I totally understand. Heck, I still had fun and the Eagles won!

So this is a vary small and rough color study in pencil and water soluble pastels in the field (and hard pastels later). It's on multimedia sketch book paper

Title: Thaw along the Schuylkill River

Size: 5.5 x 8.5

Pat Quigley

Norristown, PA

