



Because of Hurricane Helene's devastation, this Adventure F-3 Web Show has been delayed in reaching you. Hoping you have been safe and supported through the storm and recovery, here are wonderful new images to lift your spirits.



## APS ADVENTURES IN PASTEL 2024

### Adventure F-3

# SEPIA

This was a challenge to explore the richness and flexibility of using a single color to create an underpainting or an entire work.

**Twenty-two** member artists share their experiences working in one color.

**Enjoy!**

## Adventure F-3

# SEPIA

I loved this adventure. There's nothing like monochrome painting to get you to really study lights and darks. IMO. This is our cat Simon at a good "calm" moment. He has solid black fur. I used Kitty Wallis Belgium white paper. Tones of sepia by using panpastel sponges and color and defining those areas that needed clearer lines with sumi brushes, rubber acrylic spatulas and my fingertips. Fun challenge....Thank you team.

Sepia Simon

Panpastels, soft pastels, and pastel pencils.

Size 21x 18

**Kathy Amspacher**

**Hendersonville, NC**



## Adventure F-3

# SEPIA

“Alaskan Cranes”

Uart

9x12

Terry Ludwig, Nupastels

I opted to go with greens instead of the sepia color because I felt a little more engaged.

My son and I took a walk in Homer, Alaska, and we stumbled on these cranes in a ladies backyard. When I started this challenge, I kept wanting to pick up other colors and then got used to using only green. In doing this exercise, I felt like I paid better attention to the values which I do not always do and it was easier for me to see and replicate. Fun! Think I'll try again!

**Catharin McCarthy Banta**

**Hendersonville, NC**



Adventure F-3

**SEPIA**

8" x 5"

Rising museum board 4 ply

NuPastel

"Almost Pie"

**Claire Benton**  
**Riverview, FL**



## Adventure F-3

# SEPIA

“The Other Side” 12x9” uart 600

This adventure was not only fun but was also a very helpful lesson for me in the importance of establishing values at the very beginning of a painting. I used burnt umber and lightened some of the areas by brushing them with varying amounts of alcohol. I was having so much fun, I forgot about sticking with the same color and started using yellow ochre especially in the leafy areas. As soon as I realized what I was doing, I stopped and photographed the piece.

I have a tendency to use too many middle values resulting in little contrast so I’m eager to try this technique on the next painting I attempt. Thanks.

**Jane Best**  
**Morganton, NC**



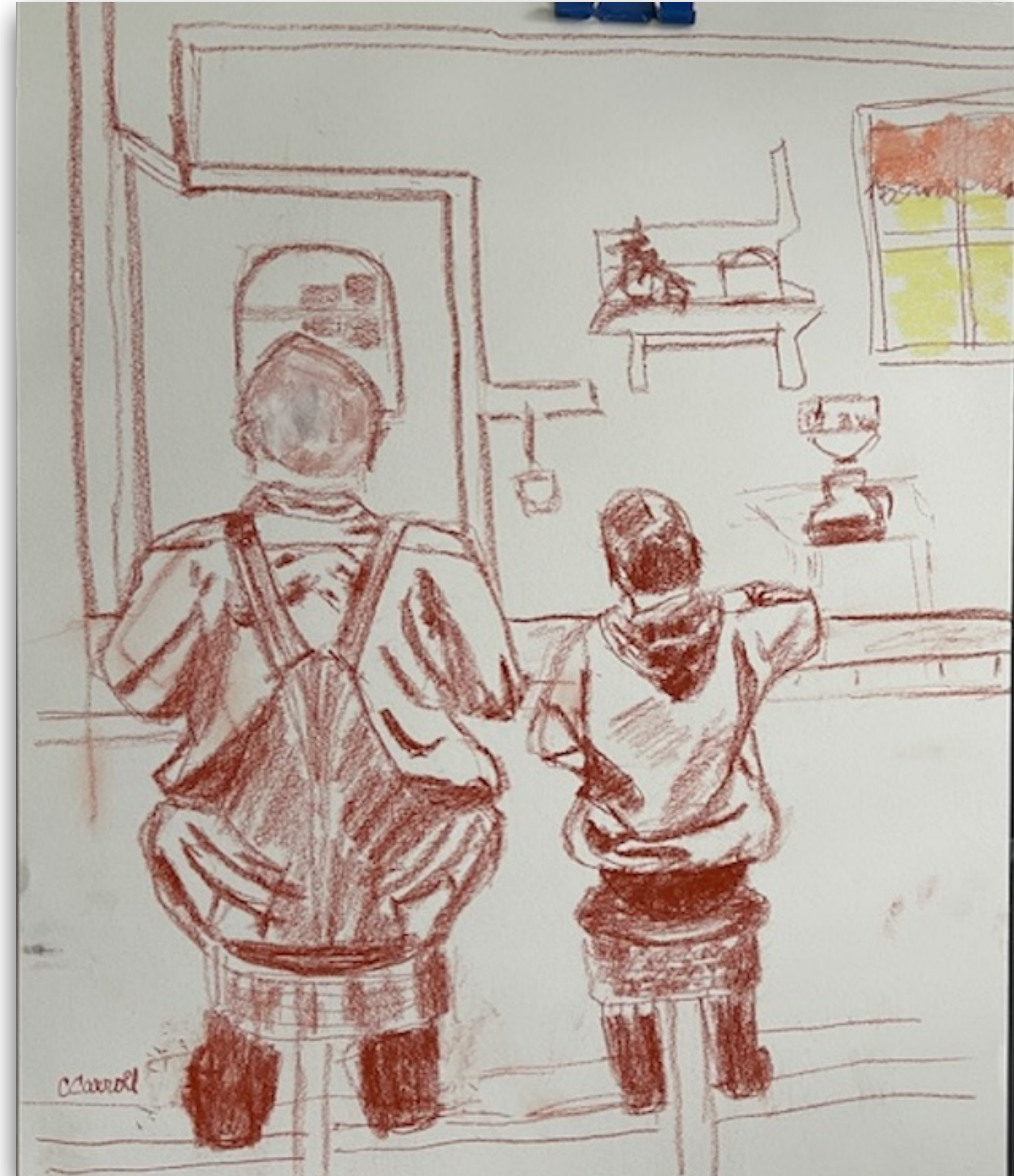
Adventure F-3

## SEPIA

My subjects are having some breakfast together downtown, grandpa and grandson. This is their usual place on Saturday mornings.

It is sketched with a sepia Conte pencil, 14x17 on off white paper, Eggs and Toast. Sorry for the color...I got carried away. 😊

**Christina Carroll**  
New Bern, NC



Adventure F-3

**SEPIA**

I used PanPastel, Nupastel stick, and a pastel pencil. They were not exactly the same color.

Title: Dahlia

Size: 8"x10 1/2"

**Deborah Chase  
Rutherfordton, NC**





## Adventure F-3

# SEPIA

The photograph was taken down by the French Broad River while having supper with our son and family who were camping there. I have done it in charcoal before. It's a place I like to draw. I think I like doing it in charcoal more than in sepia, but maybe if I do it again a few times and get more accustomed to the difference in how it goes on the paper. I may like it better.

I did enjoy the challenge.

The paper is Uart 400, 9 x 12.

I used a Faber Castell hard pastel to do the drawing.



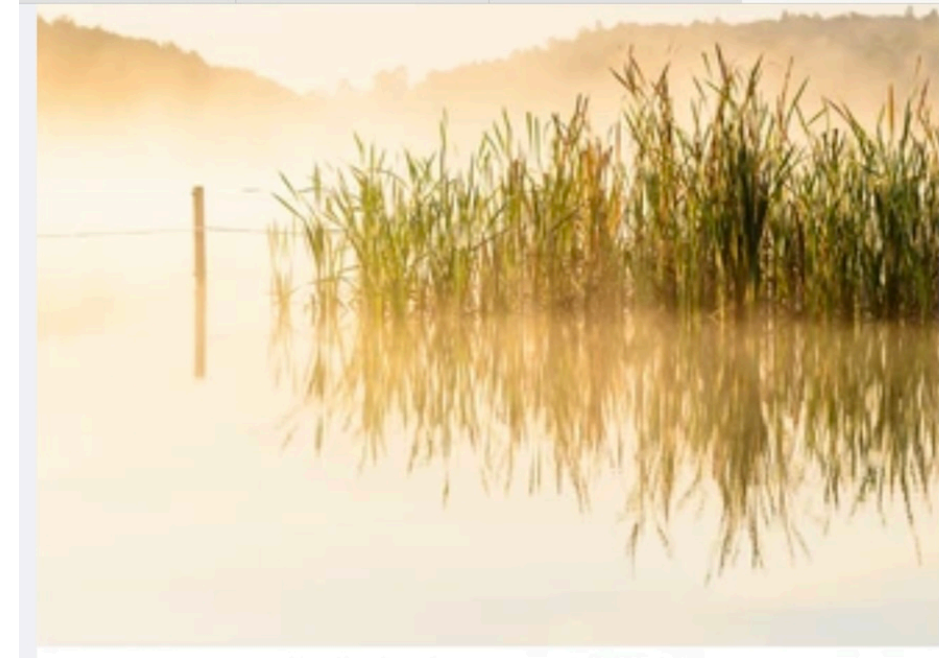
**Nancy Clausen**  
**Swannanoa, NC**

## Adventure F-3

# SEPIA

I used 9 x 12 UArt paper 400, NuPastels, Art Alternatives and Sennelier soft pastels. I tried out using alcohol for a wash with the background, inspired by Terrilynn's youtube video. Still have more to learn with that!

**Pam Clifford**  
Hendersonville NC



## Adventure F-3

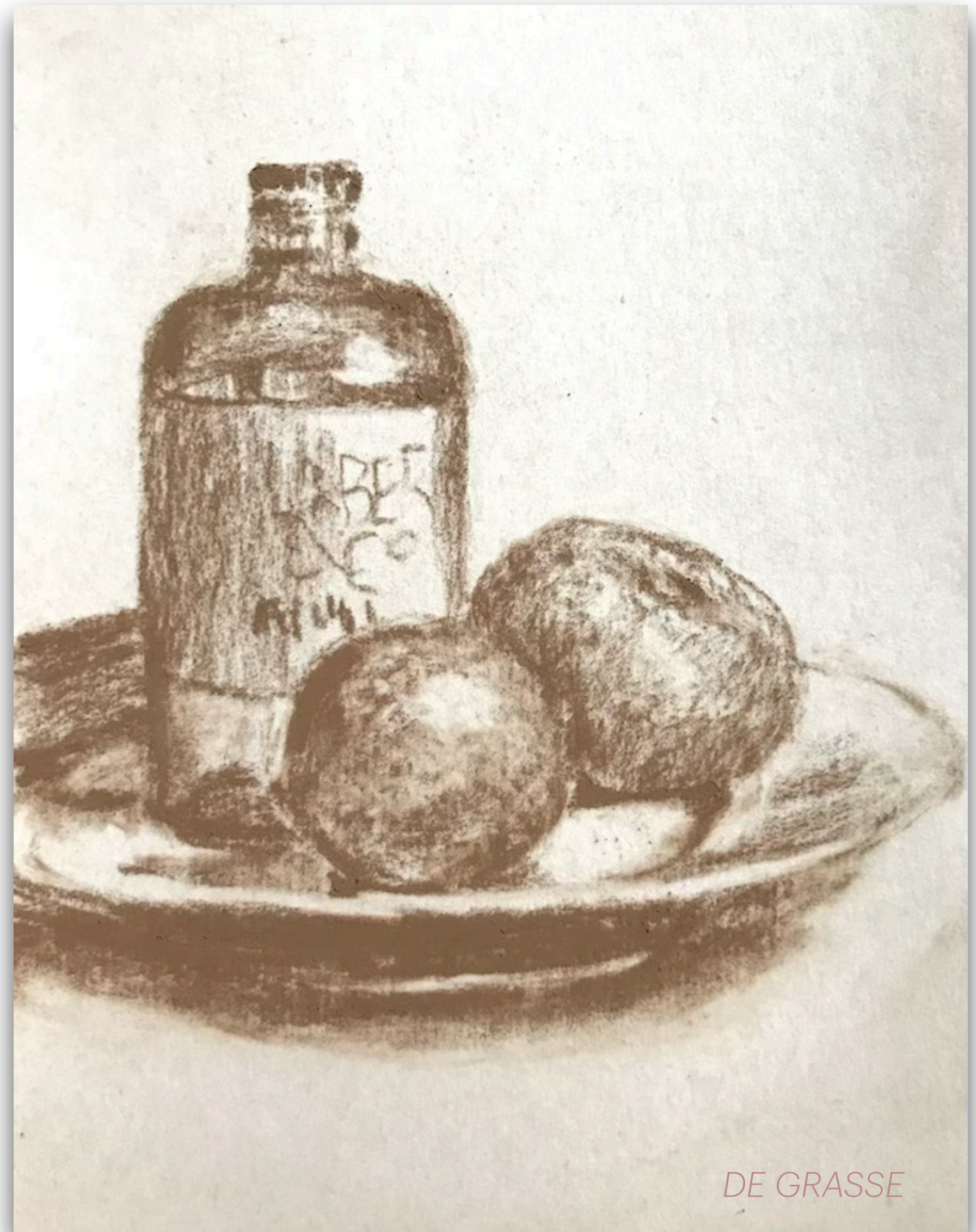
# SEPIA

For this Adventure I set up a little still life. My challenge turned out to be in my choice of materials. I used a scrap of Uart 400 paper and one Faber Castell brown pastel pencil, and learned that the paper was too coarse as it blunted the pastel tip for any detail, and it also grabbed too much pigment. I decided to become more familiar with the range of grits available and plan ahead! Thanks for the lesson!

Still Life

6x5

**Diane de Grasse**  
**Black Mountain, NC**



Adventure F-3

**SEPIA**

A well-known building in Asheville on the way to the Grove Park Inn, I love the lines and shapes that it creates in contrast to the nearby tree. I've used the classic sepia approach and added ivory highlights as happens often when using a mid-toned paper.

8x10 inches on grey PastelMat.

**Terrilynn Dubreuil**

TravelingArtista.com

**Asheville, NC**



Adventure F-3

**SEPIA**

*An extra!*

I was organizing my storage unit in Maine and came across a quad-self-portrait that I created during my university years.

It's in sepia .. I thought it might just be fun to share.

**Terrilynn Dubreuil**

TravelingArtista.com

**Asheville, NC**



*These ARE fun! ~ Ed.*

Adventure F-3

**SEPIA**

Greetings,

Attached is my 11x14 sepia painting on Lux Archival.  
Title "Low Tide"

I often sketch an underpainting using Nu pastel sepia or Paynes grey, building on top after washing in with alcohol. Here the challenge was to use the paper as my lights, scumbling for middle values.

Thank you.

**Will Evans**  
**Fairview, NC**



Adventure F-3

## SEPIA

My sepia is an 8x10 on Mattison sanded paper. The reference photo is from a museum in Vienna. I used only 4 colors with some blending. I am happy with the results. Thanks again for taking me out of my comfort zone.

Have a strictly artful day,

**Pat Fenda**  
**Tampa, FL**



Adventure F-3

**SEPIA**

Here is my entry for Challenge F-3:Sepia

Title: Moose sketch

Size: 6" x 6"

Surface: Bienfang drawing paper

Pastels: Carb-Othello pastel pencils #610 & 625

I drew this sketch from an old calendar photo. It is always a challenge to translate full color to a monochromatic value study. I will probably carry this sketch a little further by adding more shading to the body.

**Alec Hall**

**Hendersonville, NC**





Adventure F-3

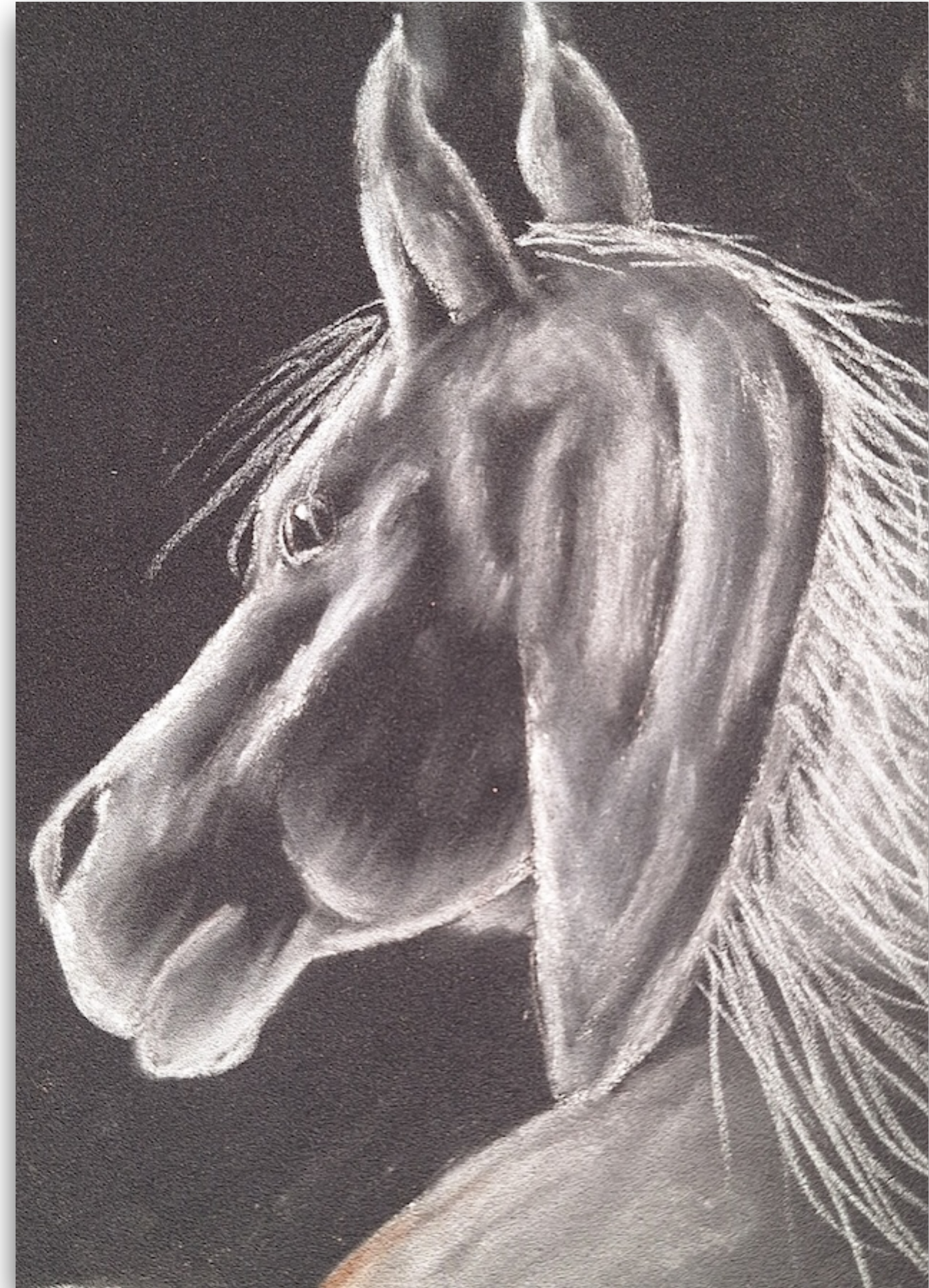
**SEPIA**

6" x 8" on La Carte pastel black card

I used only white nupastel, Schmincke, and pastel pencil. I was struggling with what to paint when an oil painting I had done caught my eye. So it's a different take on just one color but here it is.

What great topics for these challenges.  
Thanks a bunch.

**Kathy Hutchinson**  
**Rutherfordton, NC**



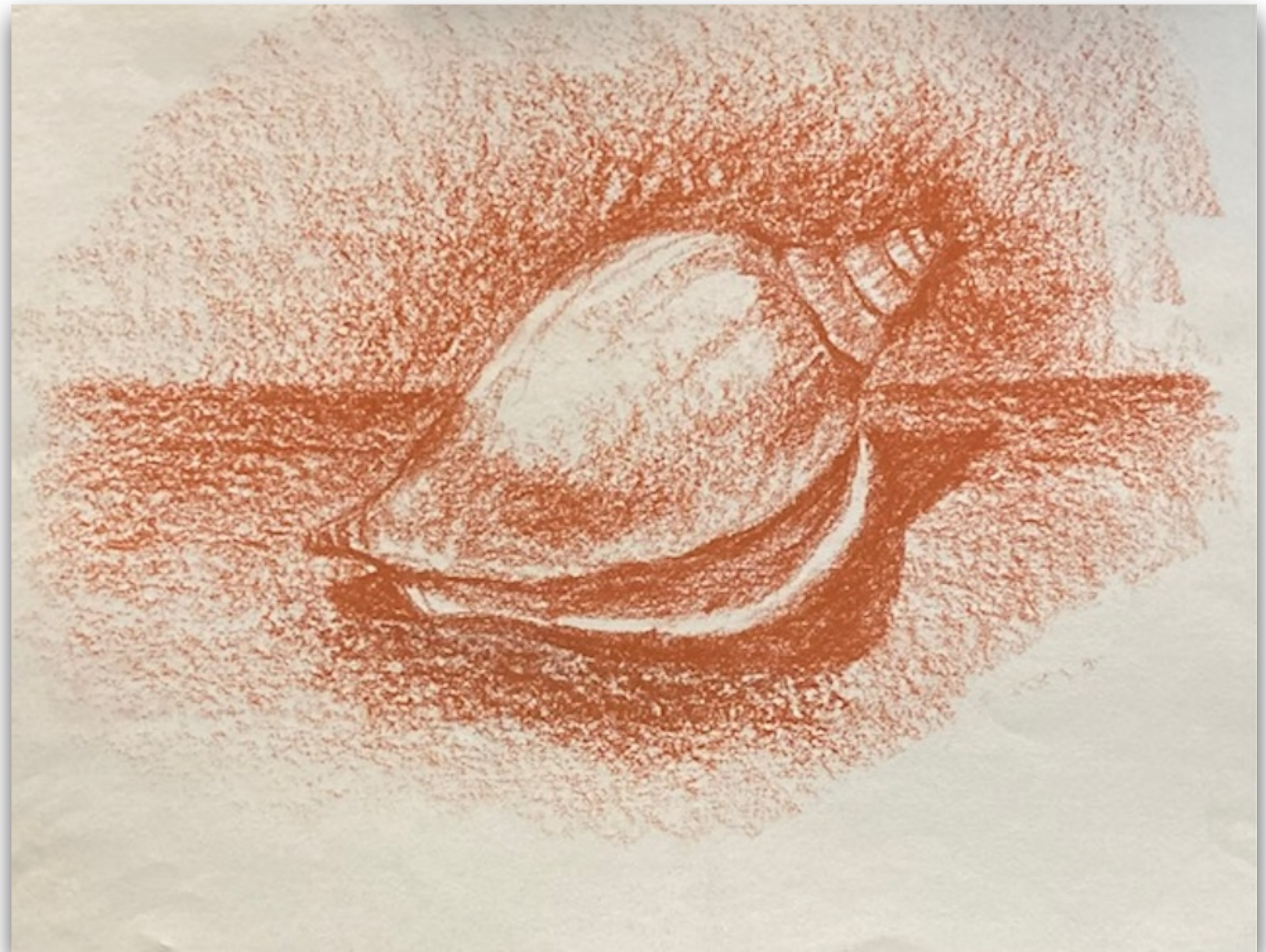
## Adventure F-3

# SEPIA

I enjoyed drawing this seashell concentrating on the negative vs positive space. It was a great exercise in using values!

I like how you can use the flat side of the pastel for broad strokes and then the top edge of it for line drawing.

**Lynn Jackson**  
**Brevard, NC**



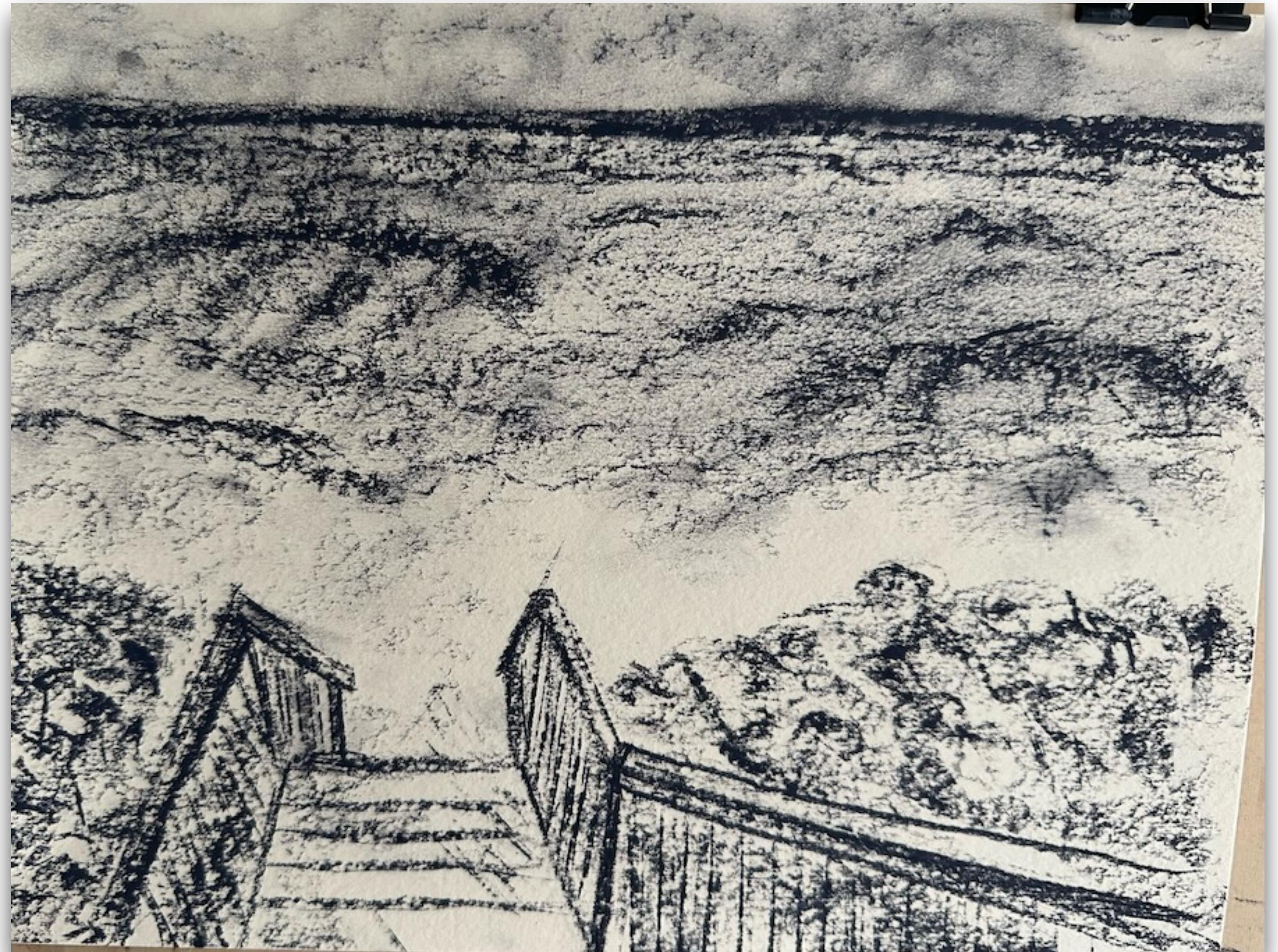
Adventure F-3

**SEPIA**

9 X 11

I just used 1 nupastel on this. I always do an underpainting, but usually are only trying to put color down. So this was interesting challenge using only one pastel.

**Karen Knaub**  
**Lake Lure, NC**



Adventure F-3

**SEPIA**

Boats

8x10

One color on off white paper

**Margaret Lyn-Soroken**

**Black Mountain, NC**



## Adventure F-3

# SEPIA

Out of the Stirrup

Gioconda on Uart 800

This was challenging as it was not like working on smooth paper with a graphite pencil.

The pastel pencil only wanted to go down as thick dark lines and did not want to blend so I could only get dark and light for the most part.

**Linda Medders-Jackson**

**Cross, SC**



Adventure F-3

**SEPIA**

"Grand Opening"

6"x 7"

On Tan Strathmore Drawing paper

I enjoyed this challenge. It was an in depth exercise on values in monochrome.

I chose a Peony opening up to focus on the complex layers of the flower. Some in shadow some in the light.

I used monochrome colors in dark, medium and light.

I used hard pastel and a few soft pastels.

I like the lighter unfinished study better than the one with a darker background.

**Meryl Meyer**

**Weaverville, NC**



## Adventure F-3

# SEPIA

I took the challenge literally and only used a single sepia color – the hard NuPastal in sepia- for the entire piece. This decision made me think more about pressure and stroke in order to get a decent value range from light to dark. Could not really get the deep blackish darks I needed but this was very instructional while being fun.

PS excuse the scratches on the surface; I did not see them till too late.

Mom's Back Door

Sepia NuPastel stick on Pastelmat

Thanks for keeping these challenges coming.

**Patricia Ann Quigley**

**Norristown, PA**



## Adventure F-3

# SEPIA

This was hard for me. The reference photo was from an instructor on Pastel Live.

I tried a portrait first and couldn't finish so I thought a landscape would be easier, it wasn't.

I used hard pastel then tried to get more by using a pastel pencil.

Doing these adventures and keeping us on our toes, they are very very valuable and I for one am greatly appreciative.

**Carol Rollick**

**Ponte Vedra Beach, FL**

